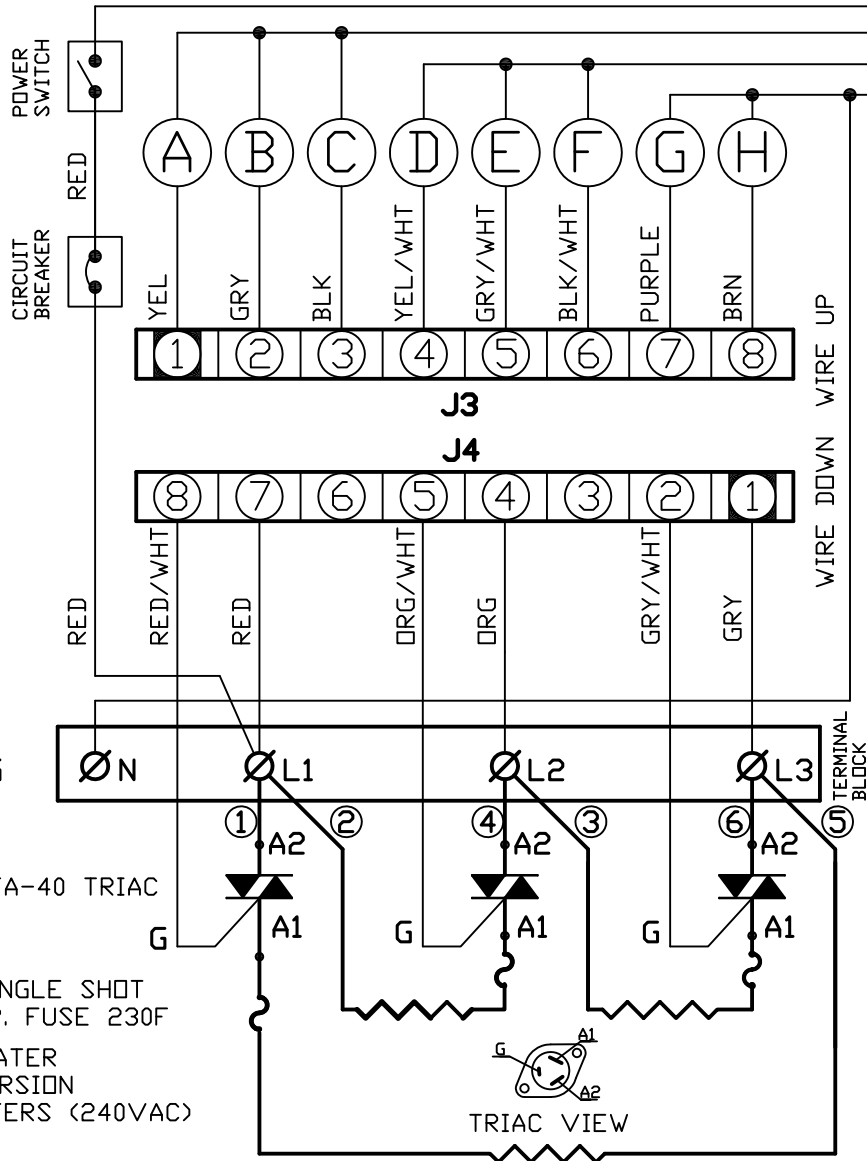
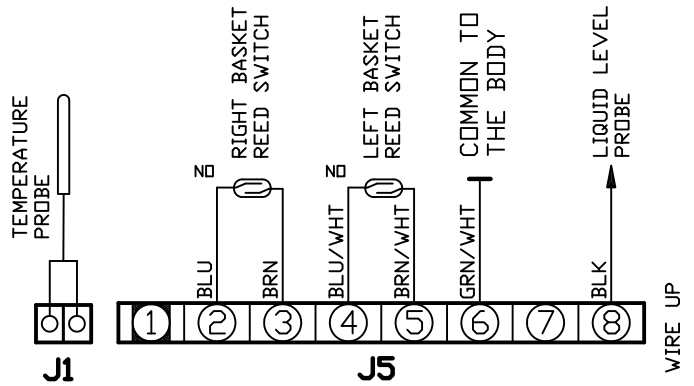
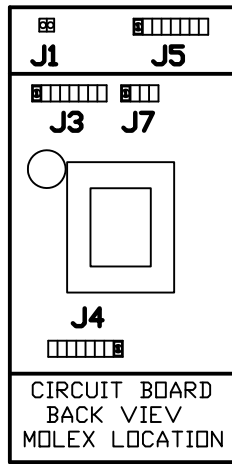


LEGEND:

- A- RIGHT LOCKER SOLENOID
- B- RIGHT BYPASS VALVE
- C- RIGHT BREW VALVE
- D- LEFT LOCKER SOLENOID
- E- LEFT BYPASS VALVE
- F- LEFT BREW VALVE
- G- HOT WATER FAUCET
- H- FILL VALVE



NOTICE TO LICENSED INSTALLER

SINGLE PHASE
JUMPER PROTECTION
JUMP L2 & L3
POWER L1 & L2

THREE PHASE
NO JUMPER!
POWER L1, L2, & L3

JUMPER



FOOD EQUIPMENT TECHNOLOGIES COMPANY, INC.
600 ROSE RD. LAKE ZURICH, IL. 60047,
PHONE: (800) 338-2699; (847)-719-3000, FAX: (847)-719-3001
e-MAIL: techsupport@fetco.com. <http://www.fetco.com>

FETCO PRODUCT NO.
CBS-2052e

DESCRIPTION
WIRING DIAGRAM, CBS-2052e, UNIVERSAL WIRING, 3PH, 4WIRE

WIRING DIAGRAM NO.
401211-011