

TECHNICAL BULLETIN

NUMBER
18

FETCO®
www.fetco.com
email : techsupport@fetco.com

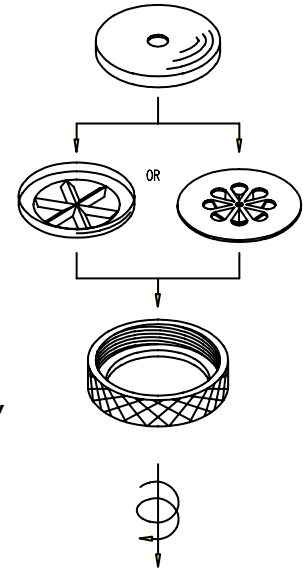
Subject: Spray Cutters and Flow Discs
Applies to: All Handle Operated Coffee Brewers

Date: September 14, 2005
Rev. October 3, 2005

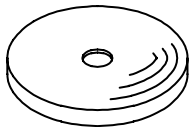
This is a list of all the available spray cutters and flow discs for our handle operated coffee brewers. If not assembled correctly as shown at right, the brew volume and spray pattern will be incorrect.

Flow disc: The size of the hole controls how fast water flows into the brew basket. A larger hole results in faster flow and a shorter brew cycle. The brew timer must be adjusted whenever the flow disc is changed to achieve the desired volume. The hole size also affects the spray pattern and turbulence.

Spray cutter: This controls the pattern of the spray over the coffee grounds, providing even saturation. The size of the center hole affects how much water is delivered to the center of the coffee bed and affects the spray pattern and turbulence.

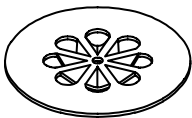


Spray Cutter Flow Disc



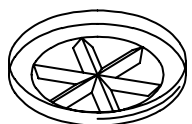
Part #	Hole Size	Standard on Models
05023	0.175"	
05025	0.187"	
05018	0.198"	
05017	0.219"	CBS-51H10
05002	0.240"	CBS-11H, 12H, CBS-51H15, 52H15, 52H20
05016	0.281"	CBS-61H, 62H
05005	0.312"	

Spray Cutter, 8+1 hole



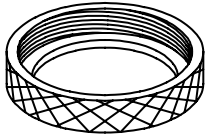
Part #	Center Hole Size	Standard on Models
05014	0.075"	All except CBS-51H10
05019	0.100"	
05020	0.125"	
05021	0.141"	

Spray Cutter, 6 or 6+1 hole



Part #	Center Hole Size	Standard on Models
05001	none	CBS-51H10
05013	0.075"	
05006	0.094"	

Spray Cutter Locknut

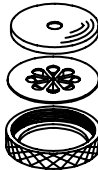


Part

31015	Standard on all models.
-------	-------------------------

Spray Cutter Assemblies

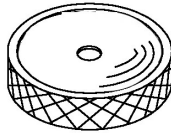
Includes flow disc, 8+1 spray cutter, and locknut as a set of three separate parts.



Part #	Includes Flow Disc #	Includes 8+1 Spray Cutter #
102063	05017 (0.219")	05014 (0.075")
102054	05002 (0.240")	05014 (0.075")
102064	05016 (0.281")	05014 (0.075")

1-Piece Welded Assemblies

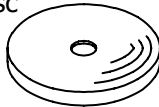
Includes flow disc, 8+1 spray cutter, and locknut, welded together.



Part #	Includes Flow Disc #	Includes 8+1 Spray Cutter #
102243	05023 (0.175")	05014 (0.075")
102304	05018 (0.198")	05019 (0.100")
102073	05017 (0.219")	05014 (0.075")
102074	05002 (0.240")	05014 (0.075")
102137	05002 (0.240")	05019 (0.100")
102075	05016 (0.281")	05014 (0.075")

1-Piece Welded Assemblies

Includes flow disc and 6+1 spray cutter, welded together.



Locknut must be ordered separately.

Part #	Includes Flow Disc #	Includes 6+1 Spray Cutter #
002053	05023 (0.175")	05013 (0.075")
002075	05025 (0.187")	05013 (0.075")

For current pricing, please go to www.fetco.com.