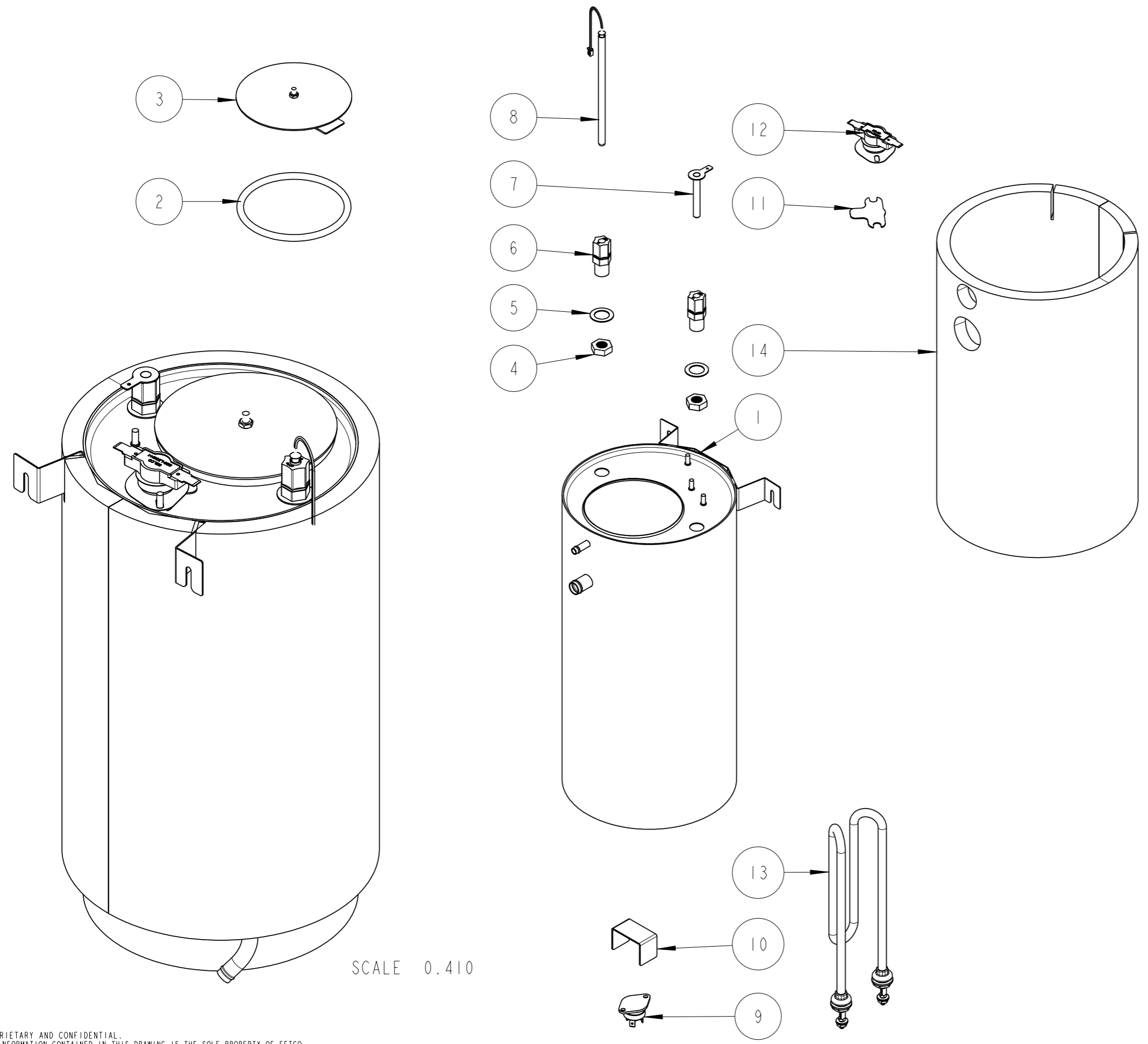


REVISIONS				BY:	A
REV	DATE	ECO NO	DESCRIPTION		
A	01/15/2009	N/A	ORIGINAL	DK	



SCALE 0.410

ITEM NO	QTY	PART NO	DESCRIPTION
14	1	1022.00004.00	INSULATION, TANK CBS-2021P
13	1	1107.00001.00	HEATER ASSY, IMMERSION 2100W/120VAC
12	1	1053.00004.00	THERMOSTAT, SINGLE SHOT, 25 AMP
11	1	1003.00005.00	BRACKET, ONE SHOT THERMOSTAT
10	1	1003.00006.00	BRACKET, HEAT SINK
9	1	1059.00001.00	TRIAC 40A, 600V
8	1	1102.00011.00	PROBE ASSEMBLY, DIGITAL TEMPERATURE 5.0
7	1	1112.00008.00	PROBE WELDMENT, WATER LEVEL 1.875" LG
6	2	1025.00001.00	FITTING, COMPRESSION MALE CONNECTOR
5	2	1083.00006.00	WASHER, .875"OD X .562"ID, FLAT
4	2	1023.00003.00	LOCKNUT 1/4"-18 NPT MODIFIED THREAD
3	1	1102.00007.00	TANK COVER ASSEMBLY
2	1	1024.00007.00	O-RING, DASH #344, TANK COVER
1	1	1114.00003.00	TANK WELDMENT, STUDS, CBS-2021P

BILL OF MATERIALS			
TOLERANCES UNLESS OTHERWISE SPECIFIED		FETCO FOOD EQUIPMENT TECHNOLOGIES COMPANY 600 ROSE ROAD, LAKE ZURICH, IL 60047, USA PHONE: (800) 338-2699 (847) 719-3002 E-MAIL: engineering@fetco.com www.fetco.com	
ALL DIMENSIONS IN INCHES		DRAWING NAME: SERVICE PARTS, TANK CBS-2021P, 2100W/120VAC	
ALL DECIMAL ± .005" ANGULAR ± 1/2°	CREATED BY: DK	DATE 01/15/2009	DRAWING NO. 1109.00003.00
THIRD-ANGLE	CHK'D BY: ML	SCALE 1.000	REVISION A
	APP'D BY: LMW	SHEETS 1 of 1	
MATERIAL N/A	GAUGE N/A	FINISH N/A	

PROPRIETARY AND CONFIDENTIAL. THE INFORMATION CONTAINED IN THIS DRAWING IS THE SOLE PROPERTY OF FETCO. ANY REPRODUCTION IN PART OR AS A WHOLE WITHOUT THE WRITTEN PERMISSION OF FETCO IS PROHIBITED.