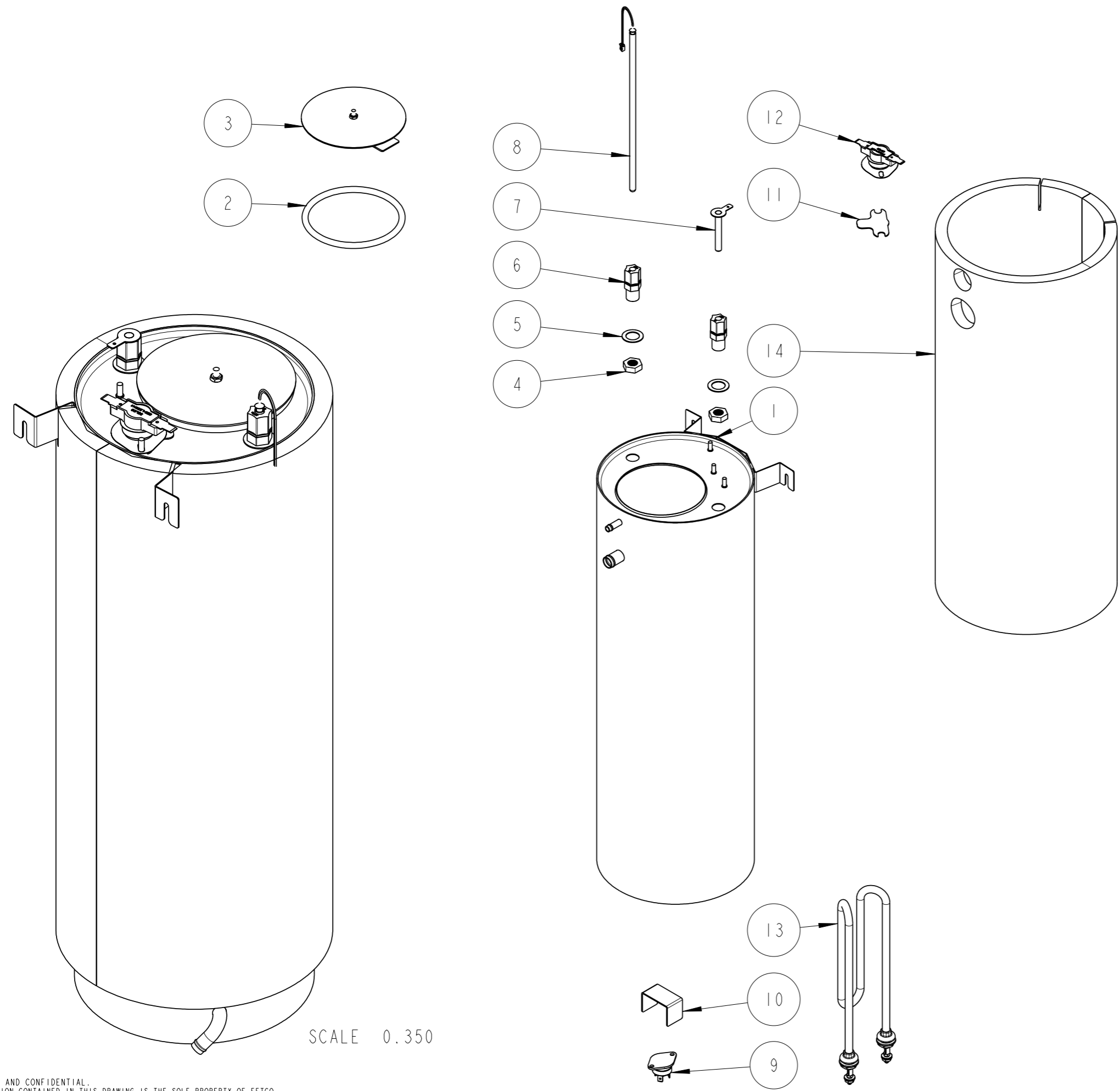


REVISIONS				
REV	DATE	ECO NO	DESCRIPTION	BY:
A	01/15/2009	N/A	ORIGINAL	DK

A



ITEM NO	QTY	PART NO	DESCRIPTION
14	1	1022.00005.00	INSULATION, TANK, CBS-2021G
13	1	1107.00001.00	HEATER ASSY, IMMERSION 2100W/120VAC
12	1	1053.00004.00	THERMOSTAT, SINGLE SHOT, 25 AMP
11	1	1003.00005.00	BRACKET, ONE SHOT THERMOSTAT
10	1	1003.00006.00	BRACKET, HEAT SINK
9	1	1059.00001.00	TRIAC 40A, 600V
8	1	1102.00010.00	PROBE ASSEMBLY, DIGITAL TEMPERATURE 8.0
7	1	1112.00008.00	PROBE WELDMENT, WATER LEVEL 1.875" LG
6	2	1025.00001.00	FITTING, COMPRESSION MALE CONNECTOR
5	2	1083.00006.00	WASHER, .875"OD X .562"ID, FLAT
4	2	1023.00003.00	LOCKNUT 1/4"-18 NPT MODIFIED THREAD
3	1	1102.00007.00	TANK COVER ASSEMBLY
2	1	1024.00007.00	O-RING, DASH #344, TANK COVER
1	1	1114.00004.00	TANK WELDMENT, STUDS, CBS-2021G

BILL OF MATERIALS

TOLERANCES UNLESS OTHERWISE SPECIFIED ALL DIMENSIONS IN INCHES ALL DECIMAL ± .005" ANGULAR ± 1/2° THIRD-ANGLE 	FETCO FOOD EQUIPMENT TECHNOLOGIES COMPANY 600 ROSE ROAD, LAKE ZURICH, IL 60047, USA PHONE: (800) 338-2699 (847) 719-3002 E-MAIL: engineering@fetco.com www.fetco.com		
	DRAWING NAME: SERVICE PARTS, TANK CBS-2021G, 2100W/120VAC		
	CREATED BY: DK	DATE: 01/15/2009	DRAWING NO.: 1109.00004.00
	CHK'D BY: ML	SCALE: 1.000	REVISION: A
APP'D BY: LMW	SHEETS: 1 of 1	FINISH: N/A	
MATERIAL: N/A	GAUGE: N/A	FINISH: N/A	

SCALE 0.350

PROPRIETARY AND CONFIDENTIAL. THE INFORMATION CONTAINED IN THIS DRAWING IS THE SOLE PROPERTY OF FETCO. ANY REPRODUCTION IN PART OR AS A WHOLE WITHOUT THE WRITTEN PERMISSION OF FETCO IS PROHIBITED.