

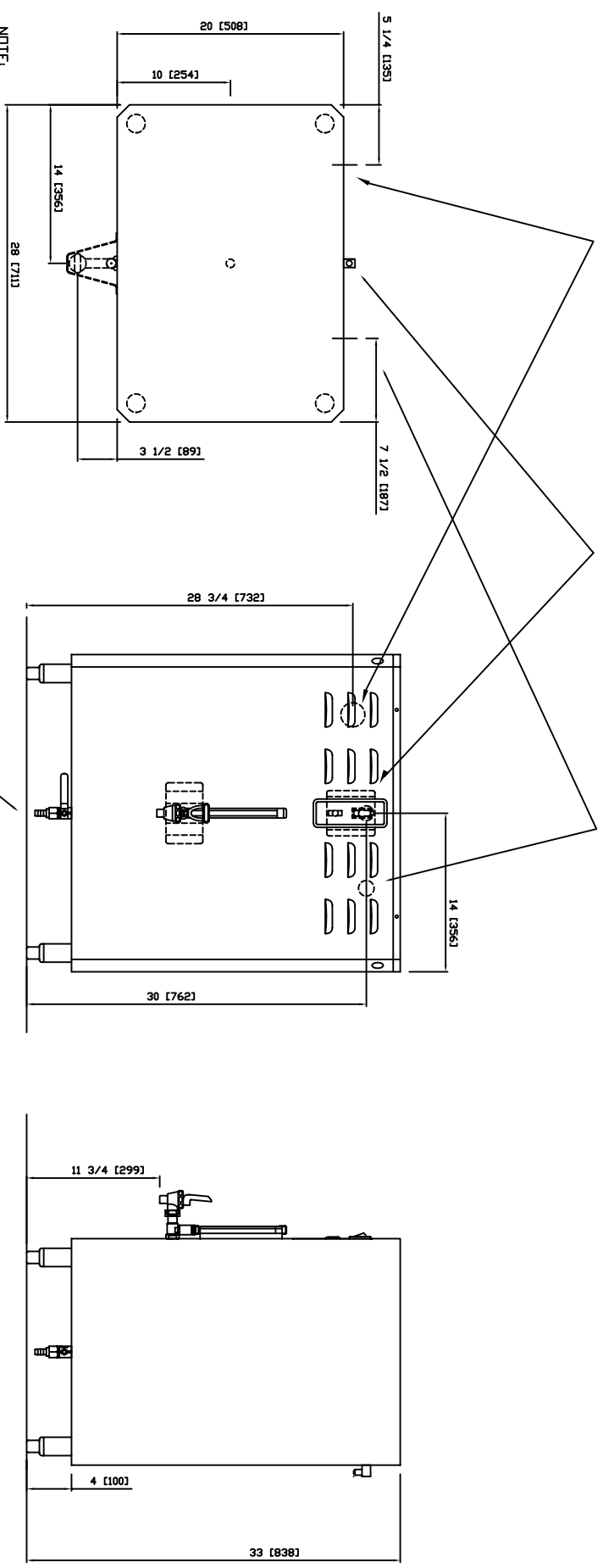
ELECTRICAL INPUT (ONE OF THE FOLLOWING) :  
 -120/208-240VAC 3PH 4 WIRE+GRD 13.6-18.1 KW 38.3-44.1 A  
 -120/208-240VAC 3PH 4 WIRE+GRD 18.1-24.1 KW 50.8-58.5 A  
 EXPORT VOLTAGES ARE ALSO AVAILABLE

WATER INLET:  
 3/8" COMPRESSION

TOTAL WEIGHT  
 IN USE:  
 X

CHECK ELECTRICAL SPECIFICATION LABEL FOR SPECIFIC SERVICE REQUIRED.  
 UTILITIES CONNECTIONS THROUGH BOTTOM AND/OR BACK WALL OF UNIT.

WATER 3/8" FPT OVERFLOW 1/2" HOSE BARB ELECTRIC PER SPEC.



NOTE:  
 PRISON VERSION:  
 -CONTROL AND FAUCET  
 -GUARDS PROVIDED  
 -GAUGE NOT INCLUDED  
 -TAMPER-RESISTANT SCREWS

MODEL: HWB-25  
 FETCD 640 HEATHROW DRIVE, LINCOLNSHIRE, IL. 60069, TEL: (800) FETCD-99  
 ROUGH IN SPECIFICATION  
 DRW. NO. 201-057  
 SCALE: 1:15