

ELECTRICAL INPUT CHOOSE (ONE OF THE FOLLOWING) :

WATER INLET:

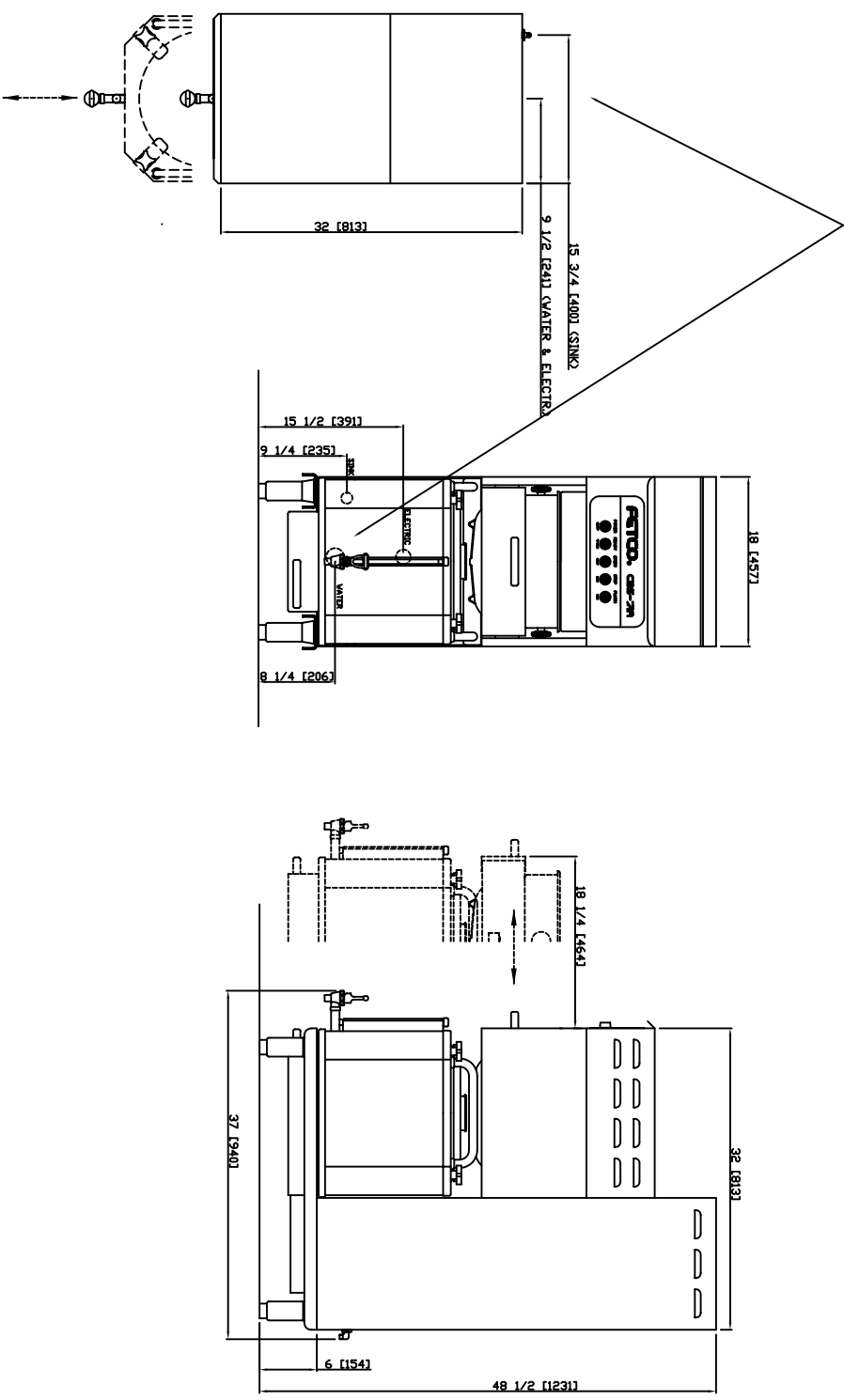
3/8" MALE FLARE
1.5 GPM FLOW RATE

TOTAL WEIGHT
IN USE (LB/KG):
389/176.8

- 120/208-240VAC 3 PH 4 WIRE+GRD 11.5-15.2KW 33.0-37.9 A
- 120/480 3 PH 4 WIRE+GRD 30.2KW 37.9A
- STEAM: 80 LBS/HOUR MAX. 10-15 PSI.
- 120VAC 2 WIRE+GRD 1.8A
- EXPORT VOLTAGES ARE ALSO AVAILABLE

CHECK ELECTRICAL SPECIFICATION LABEL FOR SPECIFIC SERVICE REQUIRED.
UTILITIES CONNECTIONS THROUGH BOTTOM AND/OR BACK WALL OF UNIT.

ELECTRIC INPUT AND WATER CONNECTION
FROM REAR



FETCD

640 HEATHROW DRIVE, LINCOLNSHIRE, IL. 60069, TEL: (800) FETCD-99

MODEL: CBS-71A

ROUGHING-IN SPECIFICATION

DRW. NO. 201040-000

SCALE: 1:15